

TI C2000 Toolbox TI C2000 Setup

This document describes *TI C2000 Setup* component from TI C2000 Toolbox library.

Short description

TI C2000 Setup component is needed in every model that relies on TI C2000 Toolbox. It enables the user to create a CCS project, build and flash the control code and configure the system settings.

Detailed overview

Component icon and component dialog are shown in Figure 1, and Figure 2, respectively.

Component properties:

- **Tab General**
 - Exported subsystem name – name of the subsystem which should be exported.
 - Project name – name of the CCS project that will be created.
 - Use model path for CCS Project – If enabled, CCS project will be created in the same folder in which the model is. If disabled, Project path property will be visible.
 - Project path – path to the folder in which CCS project will be created.
 - Target platform – type of C2000 device that is used, several LaunchPad and ControlCard devices are available.
- **Tab Deployment**
 - Build & Deploy – CCS project is created, code is exported and built, and the controller is flashed.
 - Export code – Exports the code to the CCS project directory.
 - Build – Builds the exported code.
 - Flash target – Flashes the target if the code is built. Raises error if it is not.
- **Tab Scheduling**
 - Execution rate based on – interrupt source that will trigger execution of the tasks.
- **Tab Settings** – see [First-time setup](#) for more details
 - CCS root path – path to the CCS installation directory
 - C2000Ware root path – path to the C2000Ware installation directory
 - Write settings – Write the paths to the settings
 - If these paths are invalid or not written yet, a different window will appear, suggesting an option to browse through PC to provide the paths (Figure 3). After providing the correct paths and clicking *OK*, standard window will appear.



Figure 1. TI C2000 Setup component icon

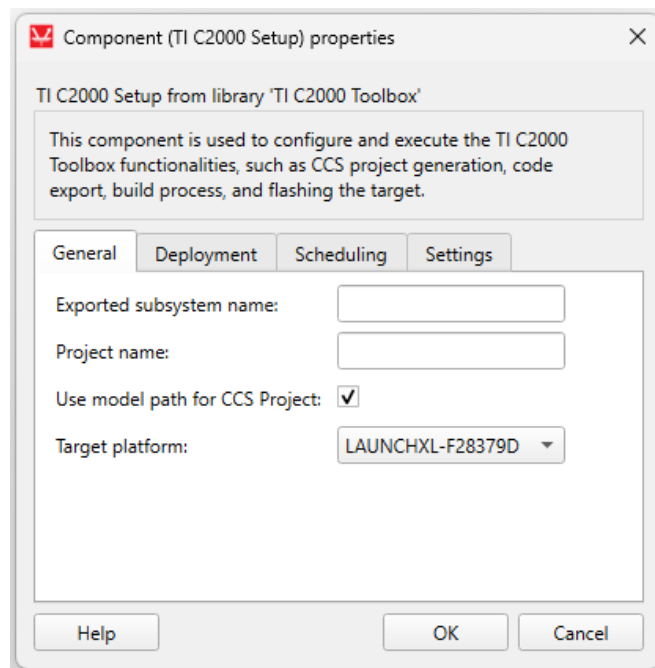


Figure 2. TI C2000 Setup – standard component dialog

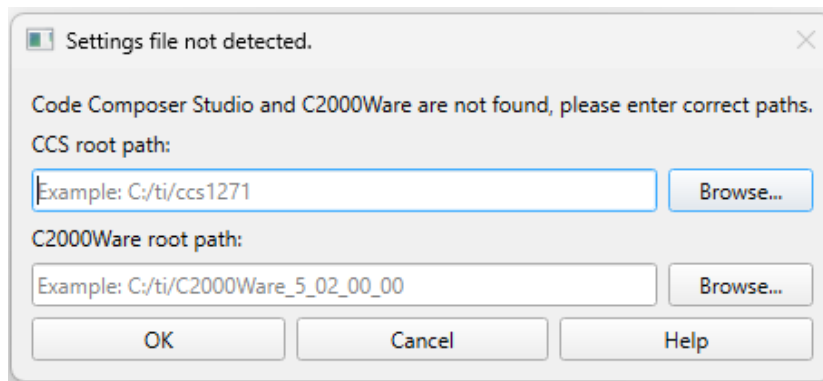


Figure 3. TI C2000 Setup – dialog when settings are not found